

## What next?

The application forms and guidance notes can be downloaded from the CNet website: [www.cnet.org.uk/grants](http://www.cnet.org.uk/grants)

Fill in all sections of the form and return it to the CNet office with copies of all relevant supporting documentation by the stated closing date.

If you need further advice or information please contact Abdul or Alison at CNet, or Katy at HALE:

[abdul@cnet.org.uk](mailto:abdul@cnet.org.uk)

[alison@cnet.org.uk](mailto:alison@cnet.org.uk)

[katy@haleproject.org.uk](mailto:katy@haleproject.org.uk)



**CNet**  
"Empowering Communities"

HALE  
Floor 2  
Merchants Quay  
Ashley Lane  
ShIPLEY  
BD17 7DB

Tel: 01274 271088

[www.haleproject.org.uk](http://www.haleproject.org.uk)

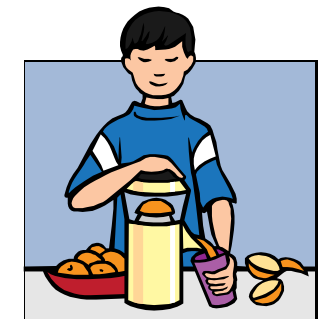
Bradford & District Community  
Empowerment Network (CNet)  
385 Canal Road  
Frizinghall  
Bradford  
BD2 1AW

Tel: 01274 714144

[www.cnet.org.uk](http://www.cnet.org.uk)

## Health & Wellbeing Grant Scheme

### Supporting healthy activities within the ShIPLEY area



# SHIPLEY HEALTH & WELLBEING GRANT SCHEME

## What is it?

The Health & Wellbeing grant is designed to encourage healthy living activities within the Shipley constituency. Activities must respond to an identified need in the local community, and support community involvement in a way which benefits people's health and wellbeing.

The grant can be used to fund a wide range of activities, for example:

- Purchase of equipment - e.g. yoga mats, ovens, tools for growing your own food
- Costs of putting on an event, or running a course or workshop
- Employing a tutor to run a course
- Contribution to rent and other overheads related to health activities
- Training for volunteers

## Who can apply?

It is open to new or existing volunteer led groups who need funds to enable them to carry out their health based activities.

The activities must take place within the Shipley constituency. This covers Shipley, Baildon, Windhill, Wrose, Bolton Woods, Bingley, Harden, Wilsden, Cottingley, Denholme, Cullingworth, Sandy Lane, Esholt, Menston and Wharfedale

## How much money is available?

Grants are available from £250 to £1,000.

## What's the timescale?

Closing dates for applications are as follows:

- Round 1 - 12:00 noon, Wednesday 15<sup>th</sup> June 2010
- Round 2 – 12:00 noon, Wednesday 15<sup>th</sup> September 2010
- Round 3 – 12:00 noon, Friday 3<sup>rd</sup> December 2010

All grants must be spent, and activities completed, by 31<sup>st</sup> March 2011.

